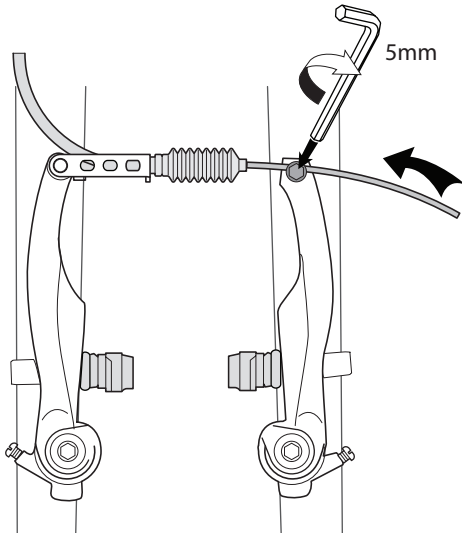


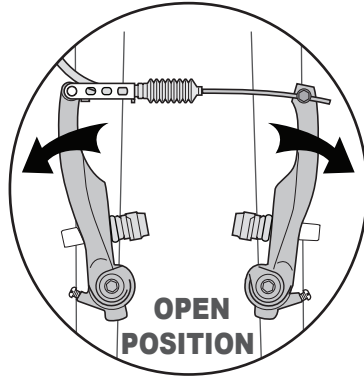
Tools Needed



1 LOOSEN ANCHOR BOLT



Loosen the anchor bolt and the brake cable will slide in, opening the brake

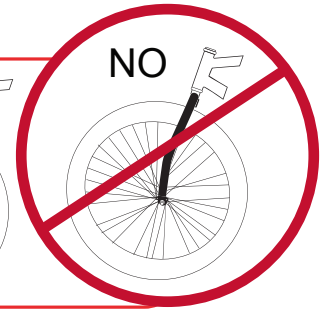


2 MOUNT WHEEL

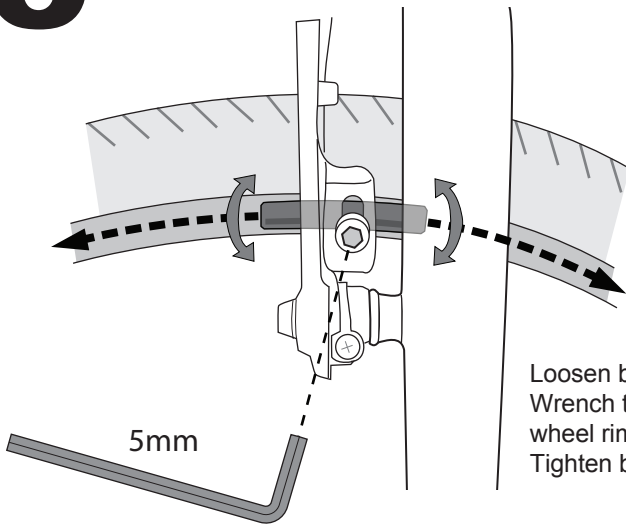
Mount front wheel according to Main Assembly Instructions. (see page 9 & 10)

WARNING!

Front fork must be turned forward to function properly.

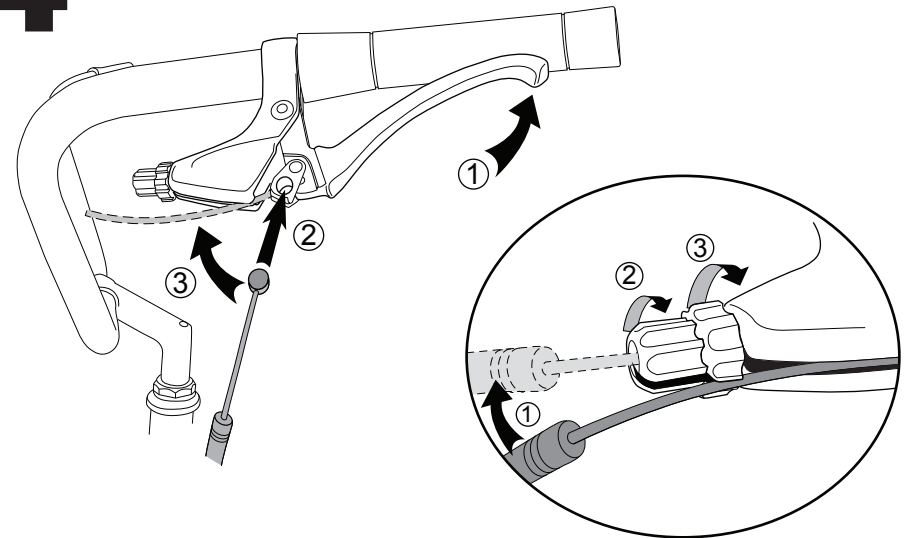


3 ALIGN BRAKE PADS PARALLEL TO RIM

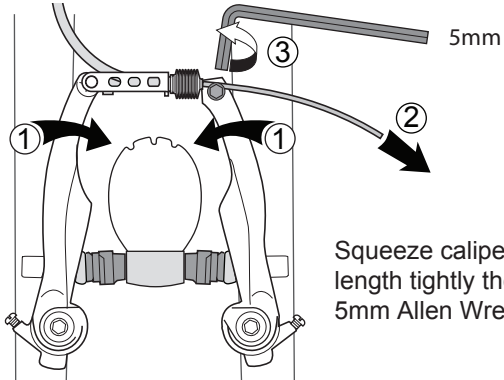


Loosen brake pad with 5mm Allen Wrench then press pad into the wheel rim. Align parallel to rim. Tighten brake pad to brake assembly.

4 CONNECT TOP OF CABLE TO BRAKE LEVER

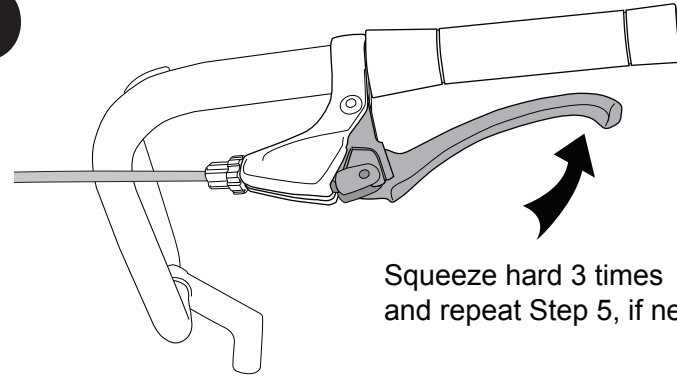


5 PULL CABLE AND ANCHOR BOLT



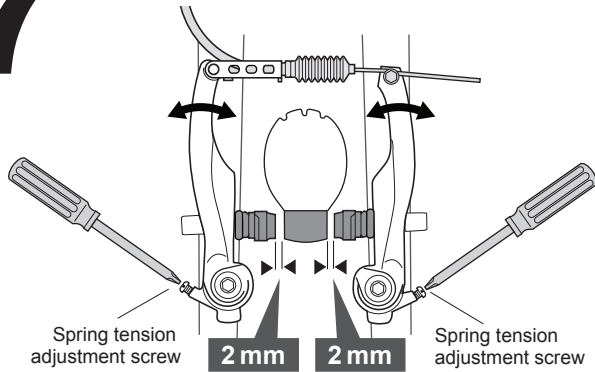
Squeeze calipers together and pull cable length tightly then tighten anchor bolt with 5mm Allen Wrench.

6 TEST



Squeeze hard 3 times and repeat Step 5, if necessary.

7 BALANCE BRAKE



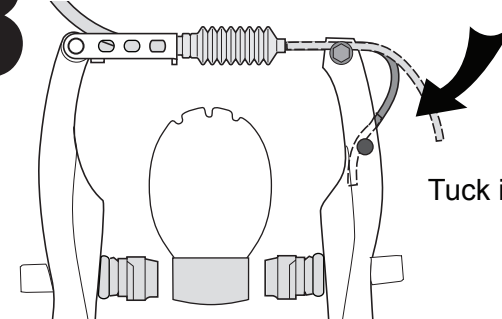
Adjust spring tension to center brake 2mm from rim on each side.

Spring tension adjustment screw

Spring tension adjustment screw

2 mm 2 mm

8 COMPLETE: TUCK CABLE IN

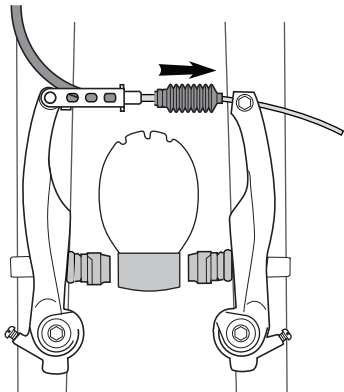


Tuck in extra brake cable.

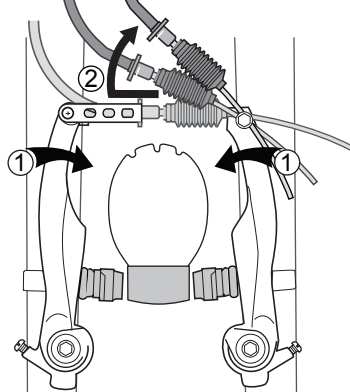
REPEAT STEPS FOR FRONT AND REAR BRAKES AS NECESSARY.
If you are still struggling with your brakes call us (888-296-4783) or consult with your local bike shop.

OPENING & CLOSING A V-BRAKE FOR WHEEL REMOVAL

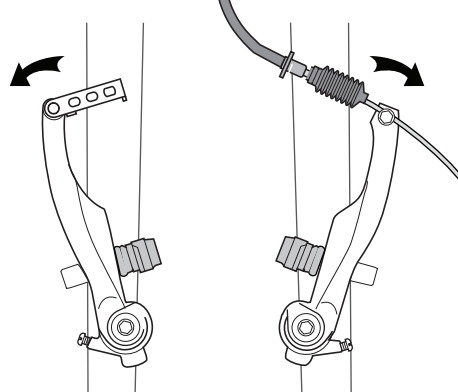
A Slide rubber bellows to the right



B Squeeze calipers & pull noodle up



C Brake calipers should spring open



D Reverse to close

