



EuroSport Assembly Instructions Supplement

© June 2010 Nirve Sports, Ltd. All rights reserved. 15401 Assembly lane, Huntington Beach, CA 92649 USA 888-296-4783 www.nirve.com

Congratulations on your purchase of Nirve EuroSport bicycle. Whether riding to commute, exercise or just for fun, we are confident that you will love your new bike. Some tools required for assembly.

IMPORTANT: FULLY READ AND COMPREHEND YOUR NIRVE OWNER'S MANUAL AND ASSEMBLY INSTRUCTIONS BEFORE ATTEMPTING TO ASSEMBLE AND RIDE THIS BIKE. IF POSSIBLE, NIRVE ALWAYS RECOMMENDS THAT YOU HAVE YOUR BIKE ASSEMBLED BY A PROFESSIONAL BICYCLE MECHANIC!

1 REMOVE PACKAGING

Remove all packaging and parts.
NOTE: do not use sharp tools to remove shipping materials as you can damage the bicycle.

2 MOUNT WHEEL

Mount front wheel according to Main Assembly Instructions. (see page 9 & 10)

WARNING! Front fork must be turned forward to function properly.

3 MOUNT HANDLEBAR

WARNING! Stem must be inserted to at least the minimum insertion mark. Failure to do so could cause stem and handlebar assembly to twist or disengage from fork column, possibly resulting in serious injury or death.

Step 1
Remove wedge cap from handlebar so that stem can be inserted into fork column.

Step 2
Once stem is installed in fork column, rotate handlebars to desired riding position and tighten stem's handlebar anchor bolts.

Test
While off the bike, face the rear of the bicycle and straddle the front wheel tightly between your legs. Try turning the handlebars side to side without allowing the front wheel to turn between your legs. Use force! The handlebar stem should not turn at all if the stem has been tightened sufficiently. If the handlebars turn, loosen the stem binder bolt and repeat test.

4 INSTALL PEDALS

Install pedals according to Main Assembly Instructions. (see page 14)

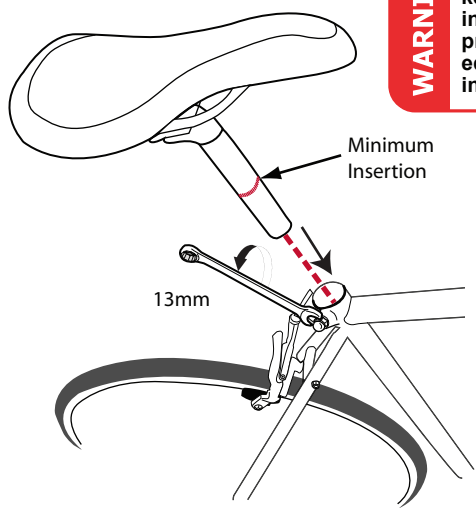
NOTE The right and left pedals are threaded in different directions and can not be interchanged. Damage will result to both pedals and crank arms if pedals are installed incorrectly

Left pedal

Right pedal

5 INSTALL SEAT

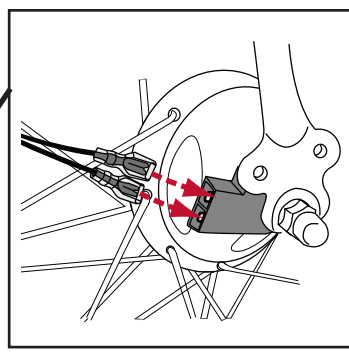
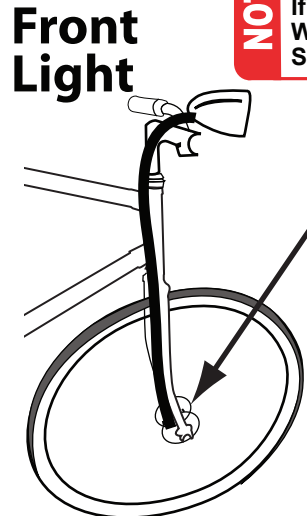
WARNING! The seat post is marked with a minimum insertion line. Failure to keep a minimum of 2-1/2 inches inserted into the seat tube and properly secured may cause equipment failure which may result in serious personal injury or death.



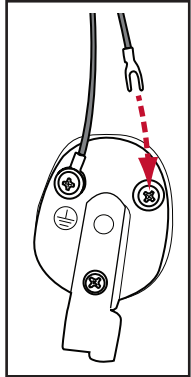
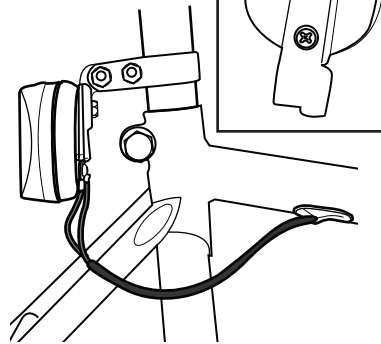
Loosen seat post by using a 13mm wrench to turn seat post binder bolt **counter-clockwise**. Raise or lower seat to desired height. **DO NOT** raise seat post beyond the marked "minimum insertion" line. Tighten binder bolt completely until secure.

6A CONNECT LIGHTS - FAIRFAX ONLY

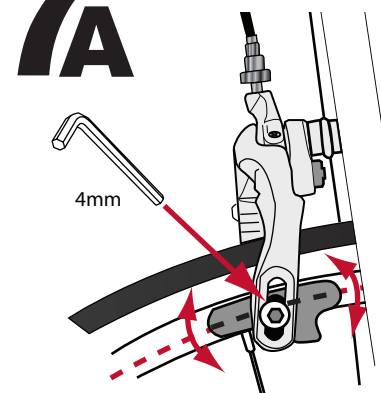
NOTE This step only applies to the Nirve Fairfax models: #3832, #3833, #3834. If you have purchased a Nirve Wilshire or Brookhurst **SKIP THIS STEP.**



B Rear Light



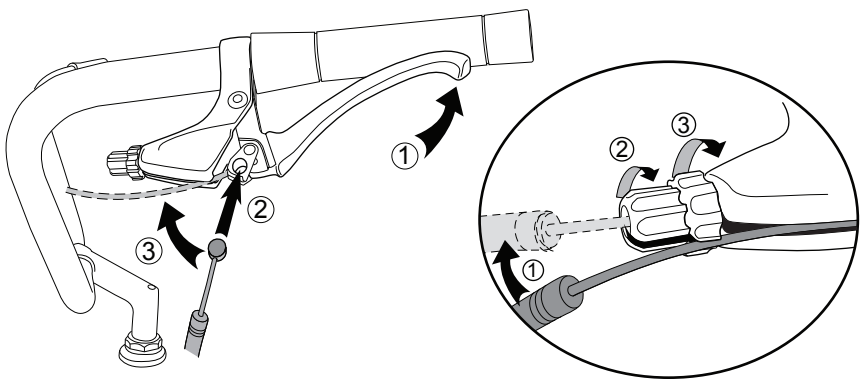
7A ADJUST BRAKES



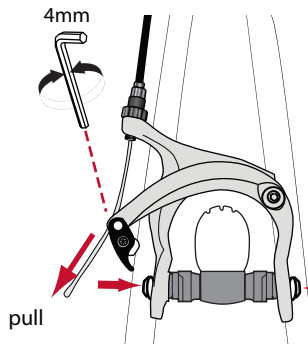
Use 4mm Allen wrench to move both left and right brake pads parallel to rim.

B

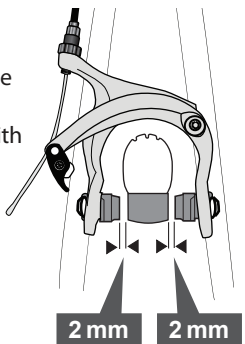
Connect the top of the brake cable to brake lever.



C



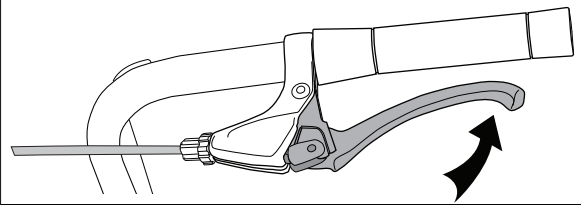
Squeeze brake arms together and pull cable length tightly. Then tighten anchor bolt with 4mm Allen Wrench.



2mm distance from brake pad to rim is recommended.

D TEST BRAKES:

Squeeze brake lever hard 3 times and repeat brake adjustment steps, if necessary.



8 INSTALL REFLECTORS

Install reflectors (Front and rear) according to Main Assembly Instructions. (see page 19)



© June 2010 Nirve Sports, Ltd. All rights reserved.